



# Cambridge International Curriculum

## Welcome Meeting

**Attendees:  
Parents, Coordinator and  
Teachers**

### School Year 2023-2024





# AGENDA

1. Welcome EITV /ISTV
2. Meet the Teachers
3. General Rules and Regulations
4. CEM TESTS
5. Cambridge Approach
6. Assessment
7. Reports
8. School Calendar
9. Field Trips
10. Parents' Questions and Ideas





# Welcome

## EITV (founding pillars)

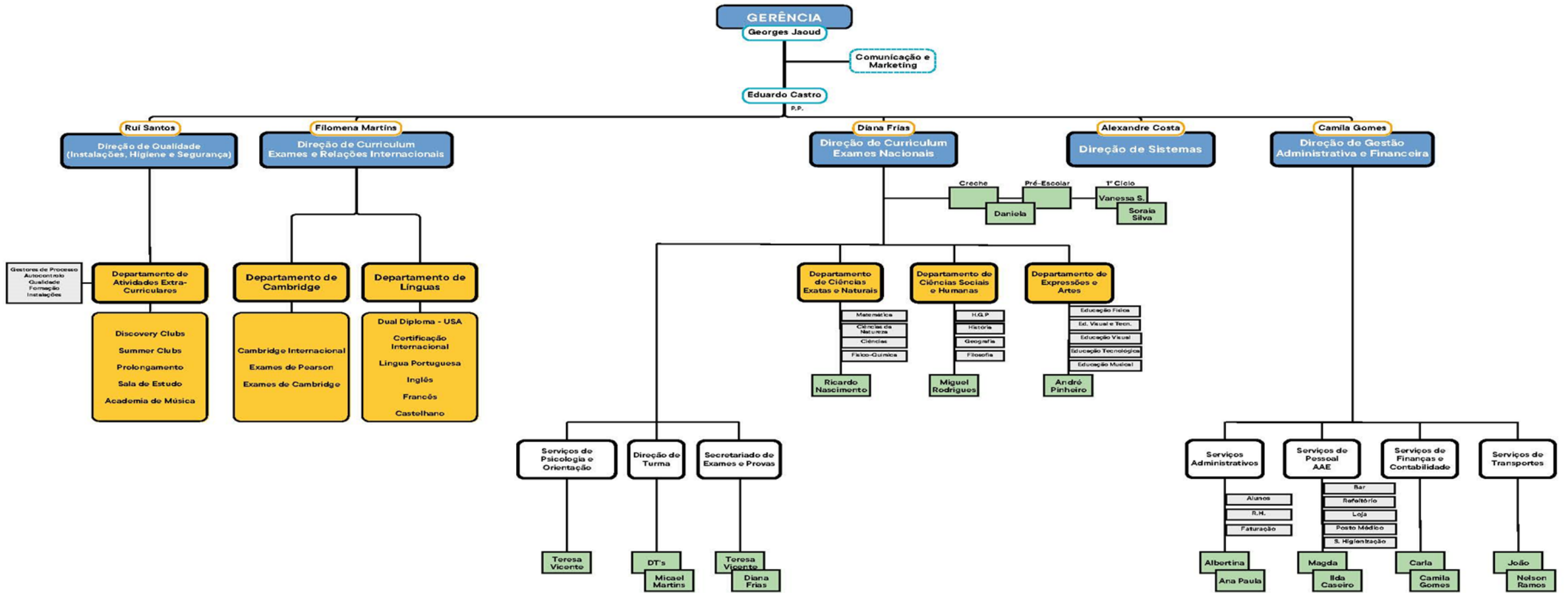
- Ethics
- Innovation
- Technology
- Values

## ISTV

The International School of Torres Vedras is keeping the same pillars and the educational project based on sustainability and adds the Cambridge Approach offering a unique educational path.



# Organigrama



Obs.:

**Currículo EITV - Inglês, Espanhol, Francês, Formação para a Cidadania (Assembleia de Turma), T.I.C. / Pensamento Computacional, Educação Musical, Educação Física e Fastrackids.**

**Todas as substituições serão efetuadas diretamente pelos indigitados ou na sua falta e impedimentos pelo respetivo superior hierárquico.**



## Meet the Principal



**Eduardo Castro**  
**Principal**  
**Managing Director**

With a degree in Electrical Engineering, a Licentiate and Master's in School Management and Administration and a Postgraduate Diploma in Municipal Law, he has been a secondary school teacher, trainer and assistant at the Lisbon School of Education and the Faculty of Sciences for 36 years.

He co-founded EITV, where he is the Managing Director and Principal, and he is accountable to the Ministry of Education. With a practical, perfectionist sense and a deep humanist sense, he believes that ethics, innovation, technology and values are the best sources of excellence.

Motto: In search of utopia.





## Meet the Director of Studies Cambridge Exams Officer and International Affairs Coordinator



**Filomena Martins**

Ph.D. Project defended and approved, entitled “The Development of the Intercultural Dimension through the Exploration of the Artistic Image in the Foreign Language Classroom” (Standby)

Master’s Degree in Teaching English and Foreign Languages

Master’s in English Studies, specializing in North American Literature

Degree in Modern Languages and Literatures (English/German)

Work experience: Teaching; Marketing, Translator, Journalist; Proofreader



# Meet the Teachers Primary



Homeroom Teacher  
Year 1



Rui Flora  
Drama  
KS1+KS2





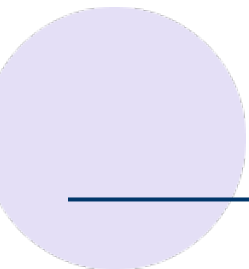
# Meet the Teachers Primary



Adriana Breviglieri  
Homeroom Teacher  
Year 2



Olga Kuczerepa  
Homeroom Teacher  
Year 3







# Meet the Teachers

## Primary



Ramona Faas  
Physical Education  
KS1 – KS3



Josefine Gombert  
SEN Teacher





Maria Rilveria  
Homeroom Teacher  
Year 4



Irina Lukina  
Homeroom Teacher  
Year 5





# Meet the Teachers Primary



Mafalda Sobral  
Portuguese  
Additional Language  
Years 1-4



Maria Blanquet  
Computing  
Year 6





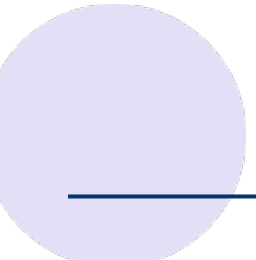
# Meet the Teachers Primary



Ashling Lobato  
Homeroom Teacher  
Year 6



Quincey Bueno  
Music + Digital Literacy





# General Rules and Regulations

- Compliance with school arrival times;
- Correct use of uniform (following the rules of the Internal Regulations);
- Identification of electronic equipment (**tablets or laptops from Year 3 onwards**) and individual belongings;
- No use of mobile phones up to year 4;
- From year 5 to year 6, learners can only use their mobiles once a week only during lunch breaks (after lunch);
- From year 7 to year 9, learners are allowed to use their mobiles only during lunch breaks (after lunch);



# General Rules and Regulations

- No use of mobile phones to take photos or use any apps (TIK-TOK or any others) inside the school building. - **Failure to comply** with this rule means that the learner shall not be allowed to use his mobile until the end of the school year.
- Always eat in the canteen;
- Appropriate behaviour on school buses.
- No running inside the school building.



# CEM TESTS

## What are CEM TESTS?

### Centre for Evaluation & Monitoring

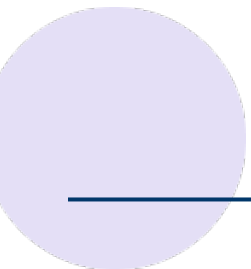


CEM assessments are formative assessments that provide a baseline measure of a student's ability and diagnostic information during their learning. These tests are age-related.

The results help teachers identify how students are doing before and during their time with them so they can effectively plan the next steps.

They also allow school leaders to plan effective school improvement strategies and evidence student progress to parents.

**EITV is using these tests to establish the level the student is starting from and to give a deeper understanding of our student's abilities.**

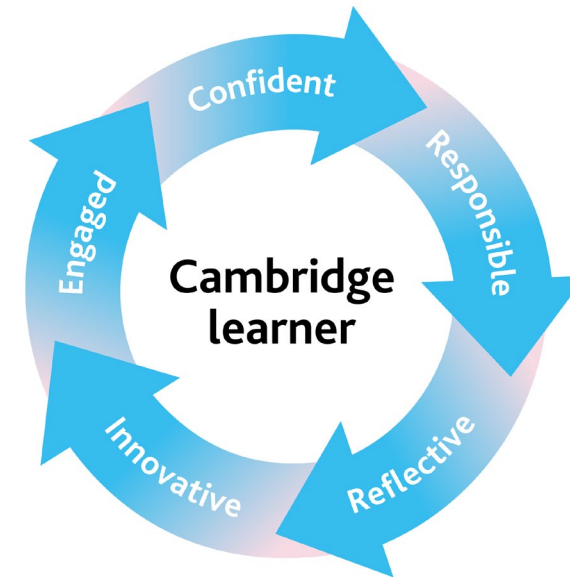




# Cambridge Approach

Cambridge International encourages the development of key learner attributes. These Cambridge learner attributes underpin the Cambridge approach and apply to teachers too. These are:

- ✓ **Reflective as learners**, developing their ability to learn.
- ✓ **Innovative** and equipped for new and future challenges.
- ✓ **Confident** in working with information and ideas – their own and those of others.
- ✓ **Engaged** intellectually and socially, ready to make a difference.
- ✓ **Responsible** for themselves, responsive to and respectful of others.







# Assessment

## Assessment for Learning – AFL

(creates feedback for students to improve Learning).

- Progress tests
- Daily work: IW, PW, GW
- school projects, self-assessment,
- peer-assessment

## Assessment of Learning – AOL

➤ checkpoint tests

Cambridge Primary Checkpoint tests will take place in the final year of primary education (year 6).

Learners will be tested in the following subjects:

English or Global English, Science, Maths and Global Perspectives (although this subject has a different approach).



## Reports

- Mid-term
- End of term
- End of year

School Calendar (online)

Field Trips

(will be communicated 2 weeks in advance)

Back to eitv.pt




school supplies ▾ timetables Calendar News Menus Documents ▾ Fees

# Welcome to the Parents/Guardians Portal

This is a website dedicated to providing information relevant to our students' Parents and Guardians, such as the weekly menu, latest announcements and other useful community information.



## TERM 1

<b>August 28</b>	<ul style="list-style-type: none"> <li>9:00 Arrival – Staff and teachers</li> <li>9:15 Welcoming the International team</li> <li>Introduction of the team - Amphitheatre 1</li> <li>10:00 Coffee Break</li> <li>10:30 – Coordination and Teachers meeting – Amphitheatre 1</li> <li>13:00 – Lunch Break</li> <li>14:00 - Coordination and Teachers' pedagogic meeting - Amphitheatre 1</li> </ul>
<b>August 29 – 31</b>	<ul style="list-style-type: none"> <li>Pedagogical Meeting (morning) Collaboration and Communication; Curriculum Planning and Alignment</li> <li>Annual and Termly planning;</li> <li>Schemes of work</li> </ul>
<b>September 1</b>	<ul style="list-style-type: none"> <li>Pedagogical Day: <u>Professional Development</u></li> <li>Publication of timetables</li> <li>17:00 Primary Parents Meeting + Coordination + teachers</li> <li>Who would like to run for PTA?</li> <li>18:00 Lower Secondary Parents Meeting + Coordination + teachers</li> <li>Who would like to run for PTA?</li> </ul>
<b>September 4</b>	<ul style="list-style-type: none"> <li>9:00 Welcoming new students</li> <li>Years 1 - 6 Group Dynamics with class teachers (indoor/outdoor activities).</li> <li>Years 7- 9 Group Dynamics with teachers (indoor/outdoor activities).</li> <li>Distribution of textbooks according to previous orders</li> </ul>
<b>September 5</b>	<ul style="list-style-type: none"> <li>School activities start</li> </ul>
<b>September 14/15</b>	<ul style="list-style-type: none"> <li>Fire Drill (<b>to be confirmed</b>)</li> </ul>
<b>September 14</b>	<ul style="list-style-type: none"> <li>Discovery Clubs/Extracurricular activities start</li> </ul>
<b>September 29</b>	<ul style="list-style-type: none"> <li>Celebration of World Music Day </li> </ul>

V1 - 27/07/2023



Página 1 de 7





## Contacts:

Coordinator: [Filomena.martins@eitv.pt](mailto:Filomena.martins@eitv.pt)

Admissions Officer: [eunice.bessa@eitv.pt](mailto:eunice.bessa@eitv.pt)

